

# **MUSSEER**

---

A DIVISION OF THE CONN-SELMER, INC.

**Dear Customer,**

We at Musser want to thank you for selecting one of our percussion instruments. Generations of **American Craftsmanship**, Knowledge and Pride go into each and every **Musser** product.

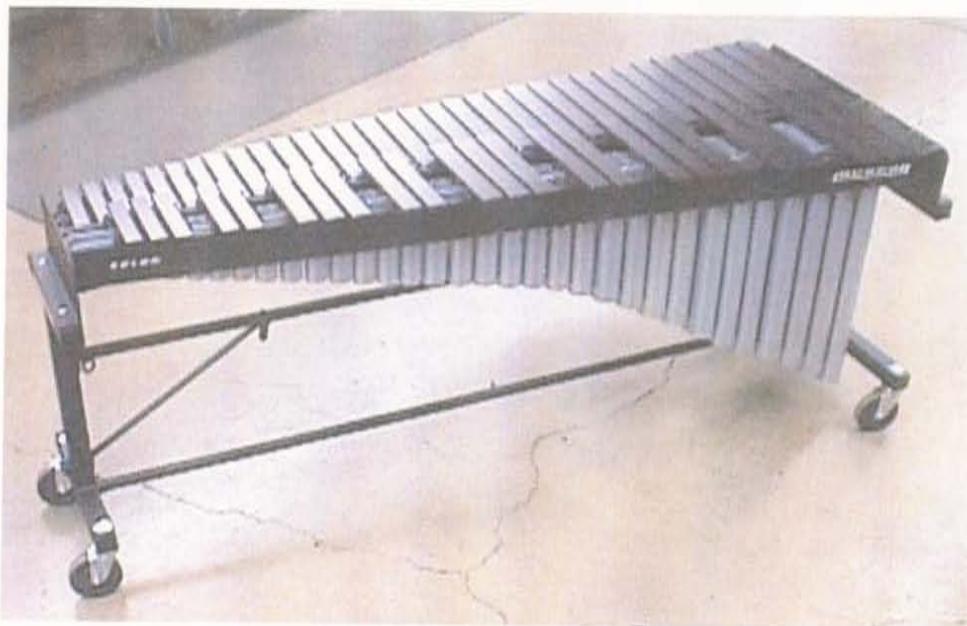
In striving to offer the highest quality instruments and service in meeting your musical needs, we ask that you please complete both the registration Form and our Customer Satisfaction Survey.

If you are pleased, **tell everyone**; if you are not, **please let us know. WE WANT TO KNOW!**

Specifications are subject to change without notice as we at Musser continue to improve our products. The information in this manual is intended to be of a general nature only.

**Thank you,**

**All Employees**  
Musser Division  
Conn-Selmer Inc.



**SPECIFICATIONS FOR MUSSER SYMPHONIC GRAND MARIMBA**

**MODEL NUMBER:** M365      **NAME:** SYMPHONIC GRAND

**KEYBOARD SPECIFICATIONS:**      **RANGE:** 4.5 Octaves - 56 Notes - F2 TO C7

**BAR SIZES:** Length of lowest note 17-7/8" graduating down to 7-5/16" highest note.

**WIDTH AND THICKNESS:**

F2 to C3	2-1/2" wide by 5/8" thick
F3# to C4	2-1/4" wide by 5/8" thick

**PITCH:** Bars tuned to A-442 Pitch

C4# to C5	2" wide by 5/8" thick
-----------	-----------------------

**MATERIAL:**      **KELON**

C5# to C6	1-3/4" wide by 5/8" thick
C6# to C7	1-1/2" wide by 5/8" thick

**RESONATOR SPECIFICATIONS:**

**MATERIAL:** High-grade light aluminum alloy tubing.

**FINISH:** Durable scratch resistant silver powder coating.

**CONSTRUCTION:** Braces shall be 1/8" thick steel fastened with screws and locking nuts to aluminum resonators. Resonators are hinged to fold in half and are solidly braced to eliminate any sag.

**FRAMEWORK:** The end supports and crossbars are constructed from steel and powder coated for a durable finish. The rails are made of selected hardwood and painted to a black durable textured finish. Size: High end 14" wide, Low end 33" wide x 36" tall x 86" long. Total weight is approximately 170 lbs.

***MADE IN THE U.S.A.***

# ASSEMBLY INSTRUCTIONS FOR THE M7365 SYMPHONIC GRAND MARIMBA

**Note:** Due to the great size, weight, cost and beautiful finish on your Classic Grand Marimba, great care should be taken when assembling and moving the instrument.

## CAUTION!

**Lay Resonators flat on the floor.** If Resonators are rested on the open mouths of the tubes, **they may fall over!** If you must rest the Resonators up side down on the open mouths of the tubes, make sure the two hinged halves are left at a 45° to 90° angle for stability. (See Photo #19)

Wash your hands with soap and water and dry thoroughly before handling the Keyboard.

## FRAME ASSEMBLY INSTRUCTIONS

1. With Casters locked, attach High End half of lower and upper Crossbar to High End Frame as shown in **Photo #1**. Push the Crossbar into the End Frame sleeve until holes are aligned; insert hand knob from top through both holes as seen in **Photo #2**. Install Hand knob and tighten using both hands. See **Photo #3**. Unlock Casters and rest End Frame on angle with lower Crossbar touching the floor.



Photo #1



Photo #2



Photo #3



Photo #4

2. With Casters locked, attach the Low End half of the Crossbar to the Low End Frame (same procedure as above). Unlock Casters on Low End Frame. Join High and Low halves of upper and lower Crossbars in center. See **Photo #5** Install Hand knob **Photo #6** and tighten using both hands. **Photo #7**.

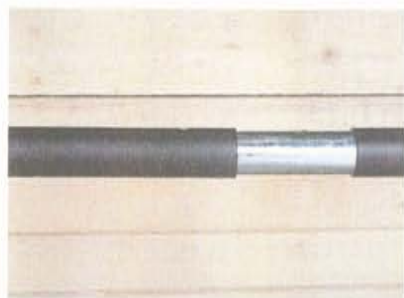


Photo #5



Photo #6

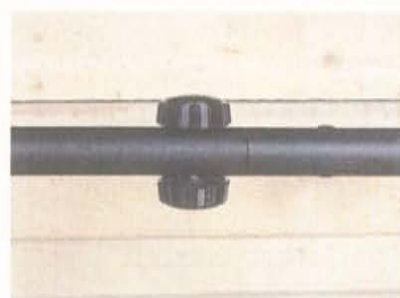
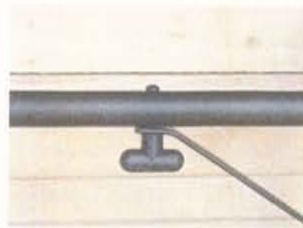


Photo #7

3. Attach the Diagonal Brace between the Crossbar and the End Frame as shown in **Photo #8 & Photo #10**. Tighten both Hand Knobs. As shown in **Photo #9 & Photo #11**. Repeat this procedure for the other end.



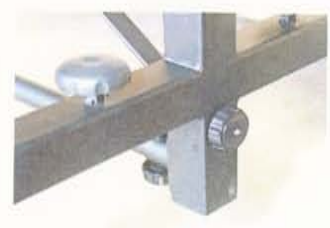
**Photo #8**



**Photo #9**

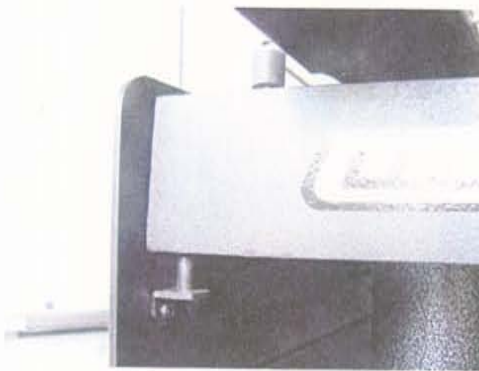


**Photo #10**

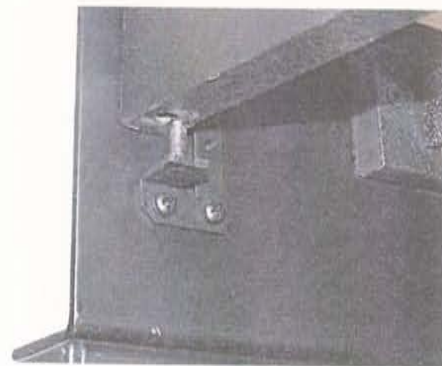


**Photo #11**

4. Note the hole at the bottom end of each rail. Insert Rail on to the small Pin in each Rail Bracket on End Frame. See **Photo #12 & Photo #13**.

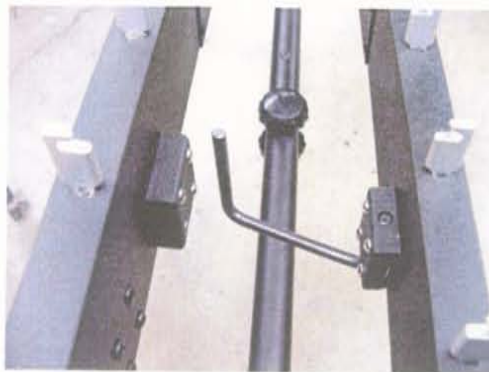


**Photo #12**

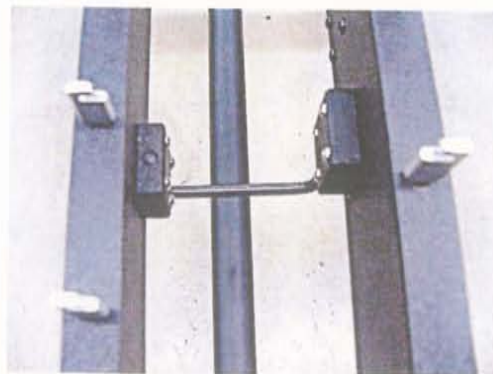


**Photo #13**

5. Unfold Rail #2 and align holes in Rail with Pins in Bracket on End Frames. (Rails are numbered 1 to 4 from player to audience.) See **Photo #12**. When aligned, push on Rail directly above Pin to seat Rail in Bracket. See **Photo #13**. Rails will fit High and Low brackets firmly.
6. Repeat Step 5 with Rail #3. Insert short Center Nodal Wire Brace located under Rail #2 into receptacle located under Rail #3. See **Photo #14 & Photo #15**.



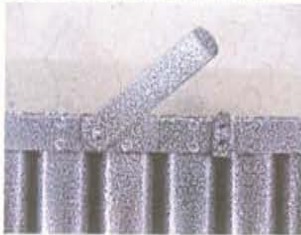
**Photo #14**



**Photo #15**

# RESONATOR ASSEMBLY INSTRUCTIONS

7. To assemble Resonators, refer to **Photo #16, 17 & 18**. The Resonators are assembled in one section. **Help from another person would make assembly and installation safe and easy.** Unfold Plain Scale Resonators, (High end section) and lock open with Pivoting Latch. See **Photo #16, #17, & #18**. As a safety precaution, when the Resonators are off the frame, the latch should be opened and the resonators folded as shown in **Photo #19**.



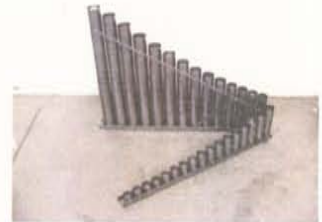
**Photo #16**



**Photo #17**



**Photo #18**



**Photo #19**

8. Place Low End of two metal Resonator Support Strips into deep set of Rubber Slots located on Low Height Adjustment Plate, See **Photo #20**. Place High End of two metal Resonator Support Strips into Rubber Slots located on High Height Adjustment Plate. See **Photo #21**. The shallow set of slots on the Low End are for high temperature and high humidity conditions. (See section on Tuning for further information.)

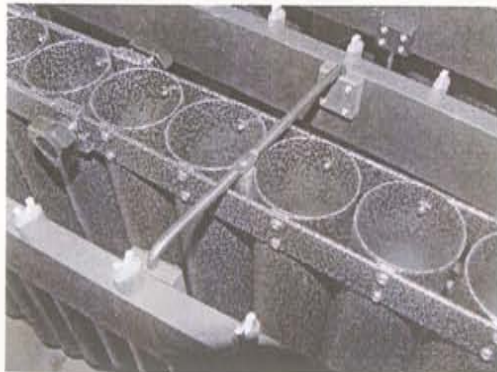


**Photo #20**



**Photo #21**

9. Repeat Steps 7 and 8 with Sharp Set of Resonators.
10. Repeat Step 5 with Rails #1 and #4, taking care to fit Nodal Wire Braces on these Rails into receptacles on Rails #2 and #3. Rubber Bumper fits inside the Metal Resonator Support Strip, next to the 'G' Sharp and 'A' Resonator Tubes. See **Photo #22 & Photo #23**.

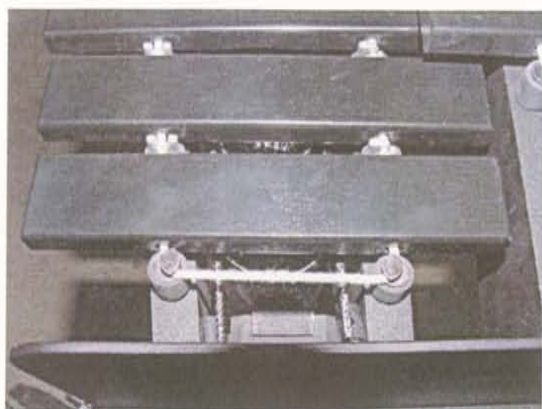


**Photo #22**

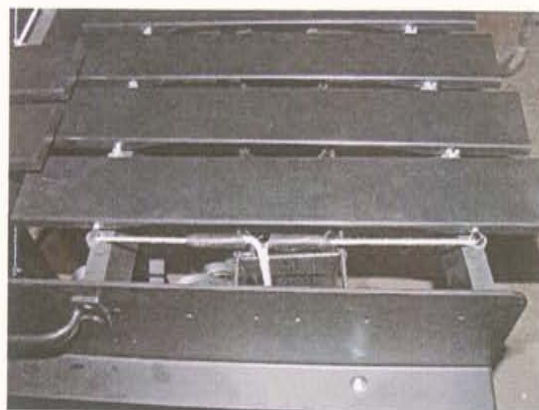


**Photo #23**

11. With Spring Assembly fully loosened, carefully place Natural Bars on instrument. Hook Cord around End Post on High End, See **Photo #24**, and work your way towards the Low End of Instrument. Hook Springs together as shown in **Photo #25**. Repeat with Sharp Bars. **When packing the Bars for transport, loosen the Springs, place a blanket or packing foam over entire length of Keyboard, and roll the Bars snugly into material, from Low End to High. When unpacking, place highest bar near its proper position, and unroll Bars from top to bottom so that blanket or packing material ends up on top of Keyboard. This procedure minimizes the risk of scratching the top of the bars.**



**Photo #24**



**Photo #25**



**Your new instrument is guaranteed against defects in workmanship and material through normal use. Please use good judgment in selecting your mallets.**

**Use of brass or steel ball mallets will nullify the guarantee.**

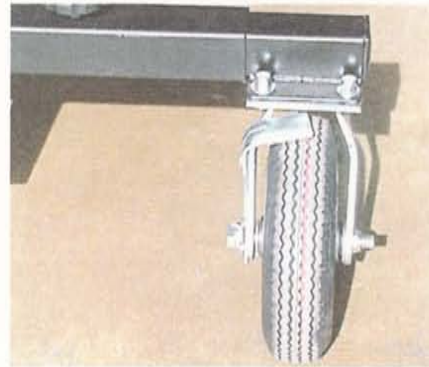
**Do not use acrylic or Lexan mallets on wood keyboards.**

## SPECIAL FEATURES FOR MUSSER M7365

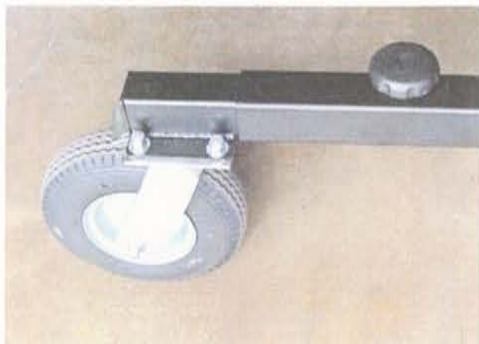
**HEIGHT ADJUSTABLE:** The keyboard height is adjustable from 35" to 39" and has two clamp knobs on the sides of each frame end. The Player's side has a hole for position, and the far side is to lock it in place. Adjusting of the keyboard height is assisted with an internal gas spring. This takes most of the weight off, so 10 to 20 lbs. of pressure is all that is necessary to move the keyboard up or down. This may vary with the weight of additional accessories.



**ALL TERRAIN WHEELS:** The pneumatic wheels are 9" in diameter by 2-1/2" wide and have a locking brake and can swivel for easy turning. These air filled tires (30 psi) can easily roll over most obstacles such as door thresholds, hoses, cords and even gravel or stone surfaces with very little effort.



**TELESCOPING WHEELS:** The wheels are designed to extend out on both sides to carry the extra weight of the Outriggers and other accessories. This will provide a greater margin of safety and stability for the instrument as well as the Musician. With the wheels in the extended out position, you can maneuver the instrument in almost any tight location.



## OPTIONAL ACCESSORIES FOR MUSSER M7365

**M8001 - RACK SYSTEM:** The "Rack System", consist of a rigid crossbar with adapters and receivers. Included, are bell mounting brackets, (4) universal clamps and fasteners for the Rack System.



**M8003 - TRAP TABLE:** The Trap table comes with a receiver and a hand knob to hold it in position.

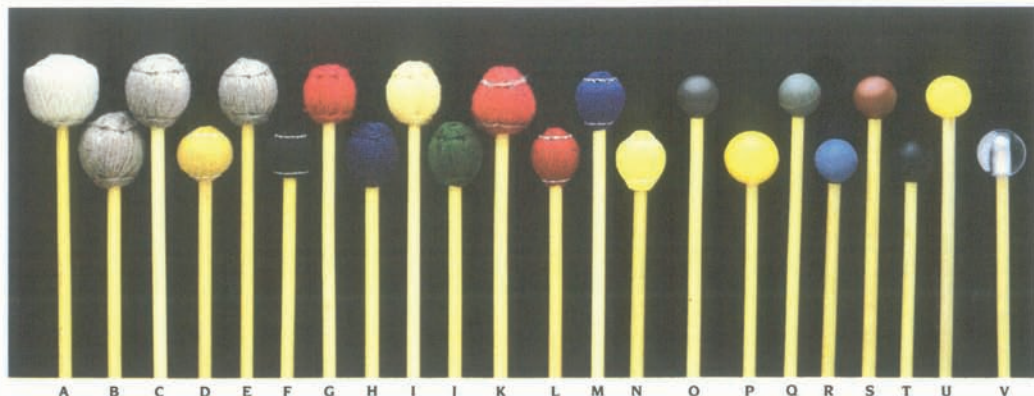


**M8004-CRASH CYMBAL HOLDER:** The Crash Cymbal holder comes with a receiver and a hand knob to hold it in position.

**M8011-UNIVERSAL CLAMP:**  
The 4 Clamps come with "U"-bolts to fasten your accessories to the crossbar.



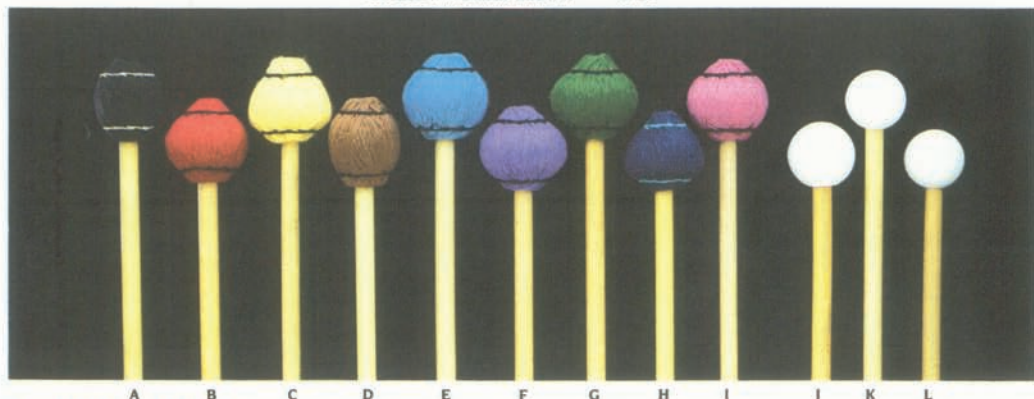




### Rattan Handle Mallets

These high quality mallets feature select rattan handles. Rubber heads are hardness-graduated for a wide selection of tonal responses. Finest grade cord or yarn is used on covered mallets. Each mallet is carefully matched and balanced for flex, weight, and size. Packed in clear-view vinyl cases. The professional Gary Burton Signature Mallets (M-220, M-221) are crafted to his personal specifications.

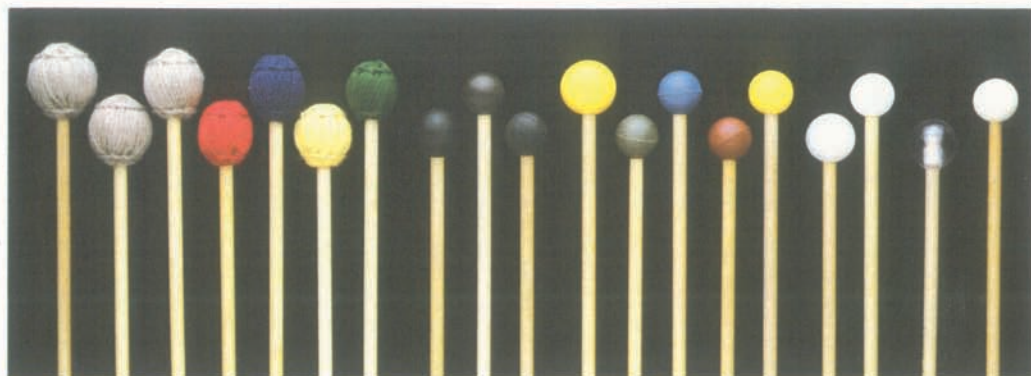
Description	Model No.	Description	Model No.
A. Yarn 1 1/8", Very Soft, Natural (M)	M-204	N. Cord 1", Soft, Yellow (V)	M-218
B. Yarn 1 1/8", Very Soft, Gray (M)	M-223	O. Phenolic 1", Hard, Brown (B, X)	M-215
C. Yarn 1 1/8", Soft, Gray (M)	M-210	P. Rubber 1 1/8", Medium Soft, Yellow (M)	M-205
D. Yarn 1 1/8", Medium Hard, Gold (M, V)	M-221	Q. Rubber 1", Hard, Gray (B, X)	M-214
E. Yarn 1 1/8", Soft, Gray (M)	M-209	R. Rubber 1", Medium Hard, Blue (M, B, X)	M-213
F. Yarn 1 1/8", Soft, Black (M, V)	M-220	S. Rubber 1", Medium, Red (M, X)	M-212
G. Yarn 1", Hard, Red (M)	M-206	T. Rubber 1", Medium Soft, Black (M)	M-224
H. Yarn 1", Medium, Blue (M, V)	M-207	U. Rubber 1", Soft, Yellow (M)	M-211
I. Yarn 1", Medium Soft, Yellow (M)	M-208	V. Lexan 1 1/8", Very Hard, Clear (B, X)	M-203
J. Yarn 1", Soft, Green (M)	M-222		
K. Yarn 1", Soft, Red (M)	M-219		
L. Cord 1", Hard, Red (V, X)	M-216		
M. Cord 1", Medium, Blue (V)	M-217		



### Good Vibes® Mallets

Good Vibes are recognized as the world's finest professional mallets. Handles are choice light rattan, carefully selected and matched for size, weight, and flex. Select premium yarn is wound around a solid, specially formulated and shaped rubber core, then carefully hand-stitched. Packed in clear-view vinyl cases.

Description	Model No.	Description	Model No.
A. Yarn 1 1/8", Hard, Black (X)	M-232	G. Yarn 1 1/8", Medium Hard, Green (V)	M-239
B. Yarn 1 1/8", Hard, Red (V)	M-236	H. Yarn 1 1/8", Medium Soft, Navy Blue (M, V)	M-228
C. Yarn 1 1/8", Medium Hard, Yellow (M, V)	M-229	I. Yarn 1 1/8", Medium Soft, Pink (V)	M-233
D. Yarn 1 1/8", Medium Hard, Brown (X)	M-231	J. Poly 1 1/8", Medium Hard, White (B, X)	M-226
E. Yarn 1 1/8", Medium Hard, Royal Blue (V)	M-235	K. Poly 1", Medium Hard, White (B, X)	M-225
F. Yarn 1 1/8", Medium Hard, Violet (V)	M-237	L. Nylon 1", Hard, White (B, X)	M-227

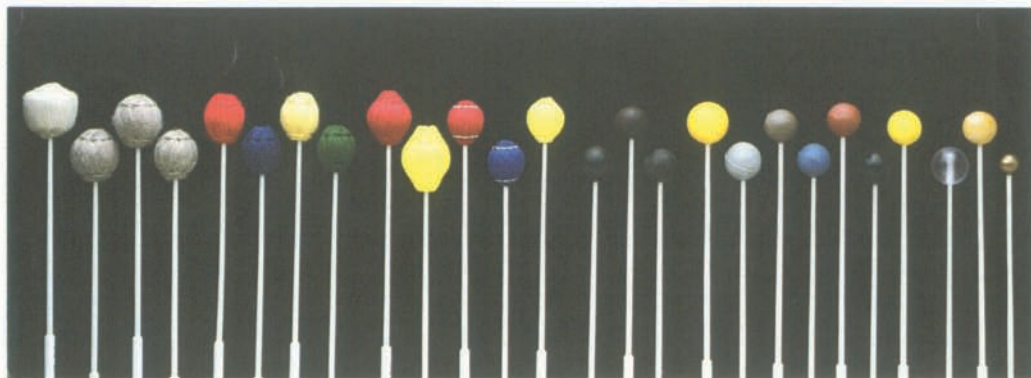


A B C D E F G H I J K L M N O P Q R S

### Birch Handle Mallets

For the mallet player who wants a straight, but firmer, wood handle mallet. Precision matched for balance, these mallets come with rubber, plastic, or yarn heads. Packaged in clear vinyl cases.

Description	Model No.		Model No.
A. Yarn 1 3/8". Very Soft, Gray (M)	M-412	K. Rubber 1 1/2", Medium Soft, Yellow (M)	M-413
B. Yarn 1 1/2", Soft, Gray (M)	M-410	L. Rubber 1", Hard, Gray (B, X)	M-404
C. Yarn 1 1/8", Soft, Gray (M)	M-409	M. Rubber 1", Medium Hard, Blue (M, B, X)	M-403
D. Yarn 1", Hard, Red (M)	M-406	N. Rubber 1", Medium, Red (M, X)	M-402
E. Yarn 1", Medium, Blue (M, V)	M-407	O. Rubber 1", Soft, Yellow (M)	M-401
F. Yarn 1", Medium Soft, Yellow (M)	M-408	P. Poly 1 1/8", Medium Hard, White (B, X)	M-4226
G. Yarn 1", Soft, Green (M)	M-411	Q. Poly 1", Medium Hard, White (B, X)	M-4225
H. Phenolic 1 1/8", Hard, Black (B, X)	M-424	R. Lexan 1 1/8", Very Hard, Clear (B, X)	M-423
I. Phenolic 1", Hard, Brown (B, X)	M-405	S. Nylon 1", Hard, White (B, X)	M-4227
J. Phenolic 1", Hard, Black (B, X)	M-428		



A B C D E F G H I J K L M N O P Q R S T U V W X Y Z

### Two-Step Handle Mallets

Musser's exclusive two-step fiber-glass handles are thick near the end for well-balanced handling and thin near the head for strong striking force. Excellent flexibility, yet highly warp resistant. All mallets precision matched for balance. Available in a wide variety of graduated rubber, plastic, metal, and wood balls as well as cord or yarn-covered balls. Packaged in clear vinyl cases.

Description	Model No.		Model No.
A. Yarn 1 3/8". Soft, Natural (M)	M-19	P. Phenolic 1", Hard, Black (B, X)	M-28
B. Yarn 1 3/8", Very Soft, Gray (M)	M-12	Q. Rubber 1 1/2", Medium Soft, Yellow (M)	M-13
C. Yarn 1 1/2", Soft, Gray (M)	M-10	R. Rubber 1 1/8", Hard, Gray (B, X)	M-22
D. Yarn 1 1/8", Soft, Gray (M)	M-9	S. Rubber 1", Hard, Gray (B, X)	M-4
E. Yarn 1", Hard, Red (M)	M-6	T. Rubber 1", Medium Hard, Blue (M, B, X)	M-3
F. Yarn 1", Medium, Blue (M, V)	M-7	U. Rubber 1", Medium, Red (M, X)	M-2
G. Yarn 1", Medium Soft, Yellow (M)	M-8	V. Rubber 1", Medium Soft, Black (M)	M-25
H. Yarn 1", Soft, Green (M)	M-11	W. Rubber 1", Soft, Yellow (M)	M-1
I. Cord 1 1/2", Medium Hard, Red (M, V)	M-27	X. Lexan 1 1/8", Very Hard, Clear (B, X)	M-23
J. Cord 1 1/2", Medium, Yellow (M, V)	M-29	Y. Wood 1", Hard, Maple ( )	M-15
K. Cord 1", Hard, Red (V, X)	M-16	Z. Brass 3/8", Very Hard, Gold (Steel Bells)	M-14
L. Cord 1", Medium, Blue (V)	M-17		
M. Cord 1", Soft, Yellow (V)	M-18		
N. Phenolic 1 1/8", Hard, Black (B, X)	M-24		
O. Phenolic 1", Hard, Brown (B, X)	M-5		

USAGE CODE: V = Vibraphone, M = Marimba, X = Xylophone, B = Bells

# HOW TO OBTAIN MALLETS, REPLACEMENT PARTS, OR SERVICE

**CONTACT YOUR LOCAL LUDWIG/MUSSER AUTHORIZED DEALER. THE DEALER WILL CONTACT OUR DEALER SERVICE DEPARTMENT TO ASSIST YOU.**

**IF YOU CANNOT LOCATE AN AUTHORIZED DEALER, PLEASE CALL 574-522-1675 AND ASK FOR DEALER SERVICE.**

**VISIT OUR LUDWIG/MUSSER  
WEB SITE ON THE INTERNET  
<http://www.ludwig-drums.com>**

## **Products**

- Drum Outfits
- Snare Drums
- Marching Percussion
- Concert Percussion
- Educational Percussion
- Hardware

## **Artists/Clinicians**

- Drum Outfits
- Marching
- Mallet Instrument
- Total Percussion

## **Promotional Items**

- Catalogs/Brochures
- Posters
- Wearable Items

## **What's New**

- New Product Press Releases
- Percussion Events

## **Dealers**

- USA by State
- Canada by Province
- International Distributors