

MUSSER

A DIVISION OF THE SELMER COMPANY, INC.

M350 SYMPHONIC GRAND MARIMBA



505 SHAWMUT AVE., LA GRANGE, ILLINOIS 60525 U.S.A. 708.354.8383, FAX 708.354.8403

MUSSER

A DIVISION OF THE CONN-SELMER, INC.

Dear Customer,

We at Musser want to thank you for selecting one of our percussion instruments. Generations of **American Craftsmanship**, Knowledge and Pride go into each and every **Musser** product.

In striving to offer the highest quality instruments and service in meeting your musical needs, we ask that you please complete both the registration Form and our Customer Satisfaction Survey.

If you are pleased, **tell everyone**; if you are not, **please let us know. WE WANT TO KNOW!**

Specifications are subject to change without notice as we at Musser continue to improve our products. The information in this manual is intended to be of a general nature only.

Thank you,

All Employees
Musser Division
Conn-Selmer Inc.

ASSEMBLY INSTRUCTIONS

M350 SYMPHONIC GRAND MARIMBA

PARTS LIST

ONE (1) WIDE END PIECE	ONE (1) PLAIN RESONATOR ASSEMBLY
ONE (1) NARROW END PIECE	ONE (1) SHARP RESONATOR ASSEMBLY
TWO (2) CROSSBAR PIECES	ONE (1) PLAIN BAR SET
THREE (3) KNOB SETS	ONE (1) SHARP BAR SET
TWO (2) BRACES	TWO (2) PAIRS OF MALLETS
FOUR (4) RAIL ASSEMBLIES	ONE (1) DUST COVER

PLEASE READ ALL INSTRUCTIONS BEFORE ASSEMBLING.

DUE TO THE SIZE OF YOUR NEW INSTRUMENT, IT IS ADVISABLE TO HAVE SOMEONE ASSIST YOU IN ASSEMBLY.

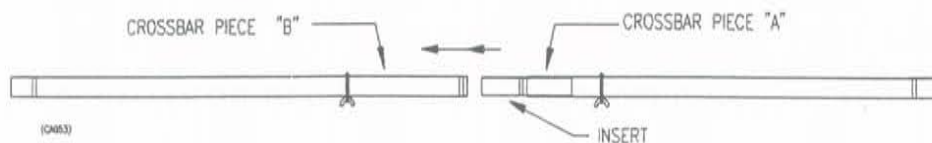
Step 1 Remove contents from package and check against parts list.

Step 2 Assemble crossbar.

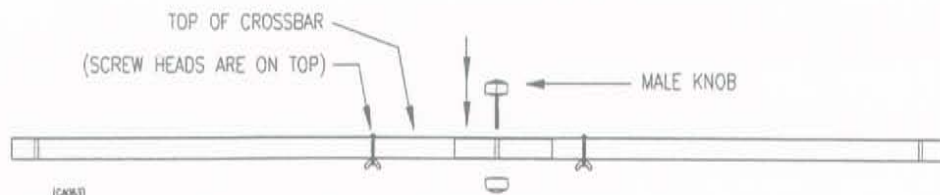
a. Assemble the two crossbar pieces.

Align both pieces with screw heads on top and wing nuts on bottom.

Insert crossbar piece "A" into crossbar piece "B".

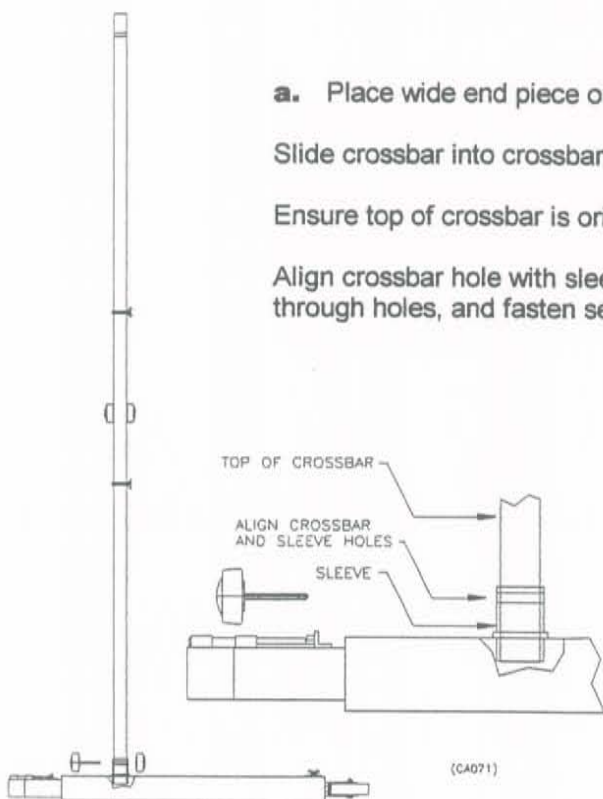


b. Insert male knob down from top, through center hole, and fasten securely to female knob.

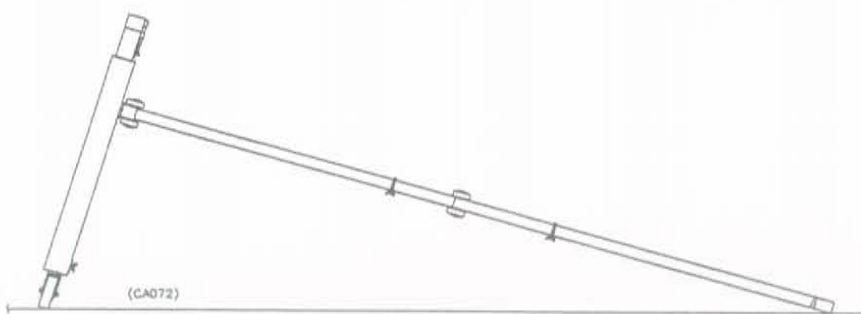


Step 3 Assemble crossbar to end pieces.

- a. Place wide end piece on a flat, smooth surface, crossbar sleeve facing up.
Slide crossbar into crossbar sleeve.
Ensure top of crossbar is oriented correctly, screw heads facing top of end piece.
Align crossbar hole with sleeve hole. Insert male knob, from top of crossbar, through holes, and fasten securely to female knob.



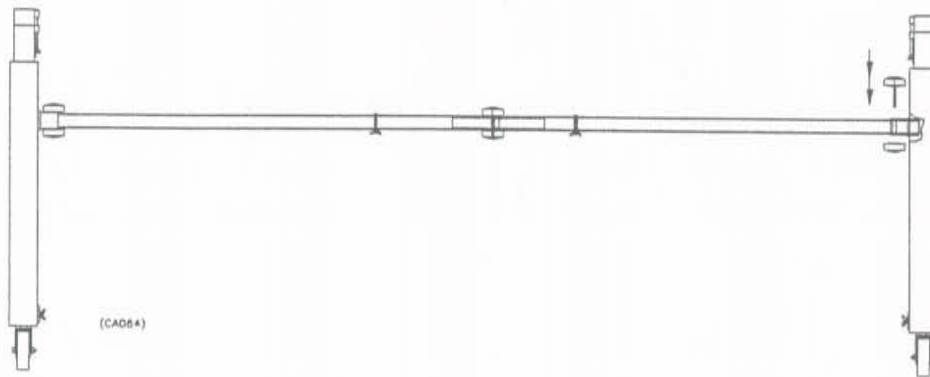
- b. Position assembly on floor as shown.



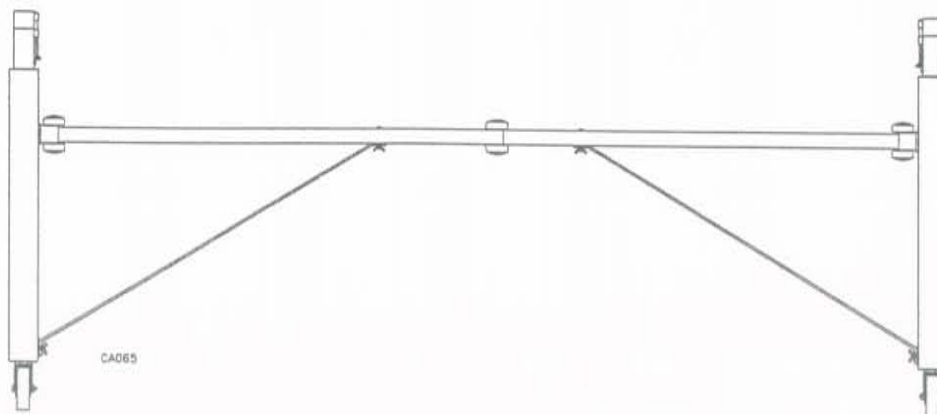
c. Assemble crossbar to narrow end piece.

Align crossbar hole with sleeve hole.

Insert male knob, from top of crossbar, through holes, and fasten securely to female knob.



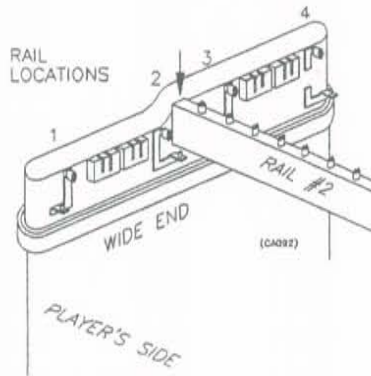
d. Assemble (2) diagonal crossbar braces (to the crossbar and end pieces) with wing nuts as shown.



Step 4 Install inside rails and resonators.

- a.** Locate the correct rail locations.

The # 1 rail is positioned closest to the player's side.



- b.** Unfold rails #2 and #3 completely.

Stamped ends of rails are always placed on the wide end.

Slip the hole at the stamped end of rail #2 onto location 2 rail bracket at the wide end.

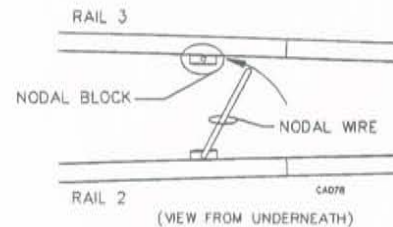
Attach the other end of the rail to location 2 rail bracket at the narrow end.

Attach rail #3 the same way at locations 3.

- c.** Connect rails #2 and #3.

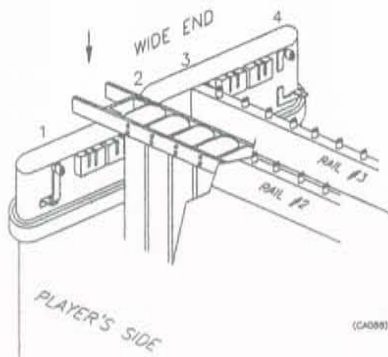
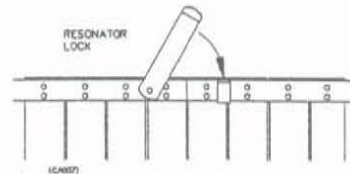
Reach down between the rails.

Swing the free end of the nodal wire away from rail #2 and secure up into the nodal block on rail #3.



- d.** Unfold the plain resonator assembly.

Lock it in place as shown.



- e.** Place the low end of the plain resonator into the resonator blocks on the wide end, player's side.

Place the high end of the plain resonator into the resonator block on the narrow end, player's side.

Install the sharp resonator the same way on the opposite side of the instrument.

Step 5 Install outside rails and bar sets.

- a. Unfold rails #1 and #4 completely.

Stamped ends of rails are always placed on the wide end.

Slip the hole at the stamped end of rail #1 onto location 1 rail bracket at the wide end.

Attach the other end of the rail to location 1 rail bracket at the narrow end.

Attach rail #4 the same way at locations 4.

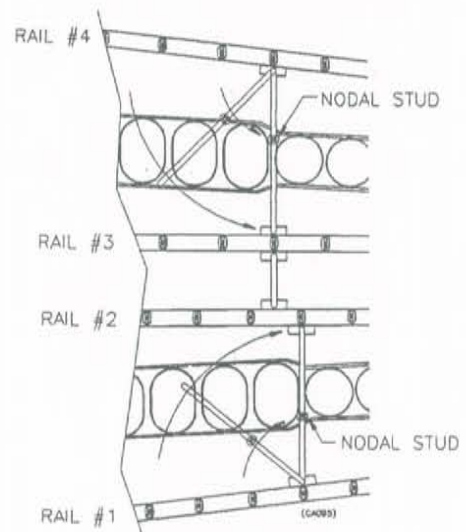
(Reference Step 4b.)

- b. Connect rails #1 and #2, #3 and #4.

Swing the free end of the nodal wire away from rail #1 and secure down into the nodal block on rail #2.

The nodal stud is secured in the space between two tubes and the resonator brace as shown.

Connect rails #3 and #4 the same way.



- c. Install bar sets.

Place the plain bar set on the player's side of the instrument.

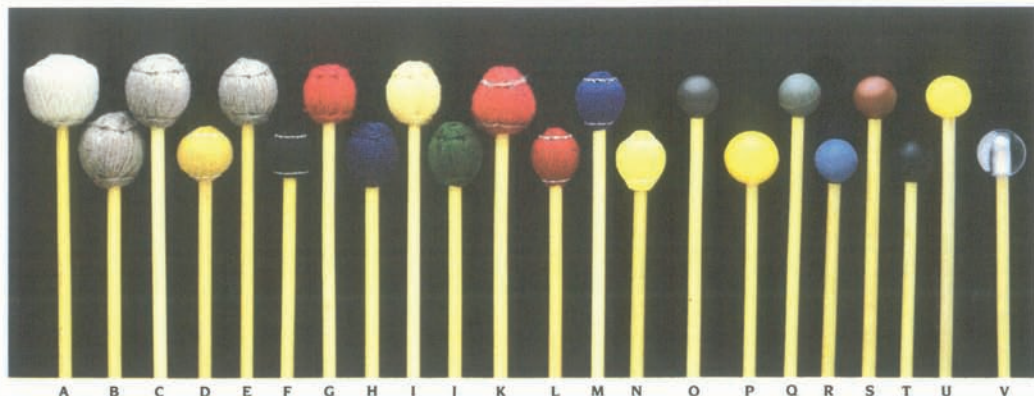
Unhook the springs at the wide end of the bar set. Place the bar cord around the posts at the narrow end.

Begin placing the bars between the posts at the wide end. When all the plain bars are placed, hook the springs together around the posts at the wide end. Make sure the cord is hooked on all posts.

Install the sharp bar set the same way.

! ENJOY YOUR INSTRUMENT !

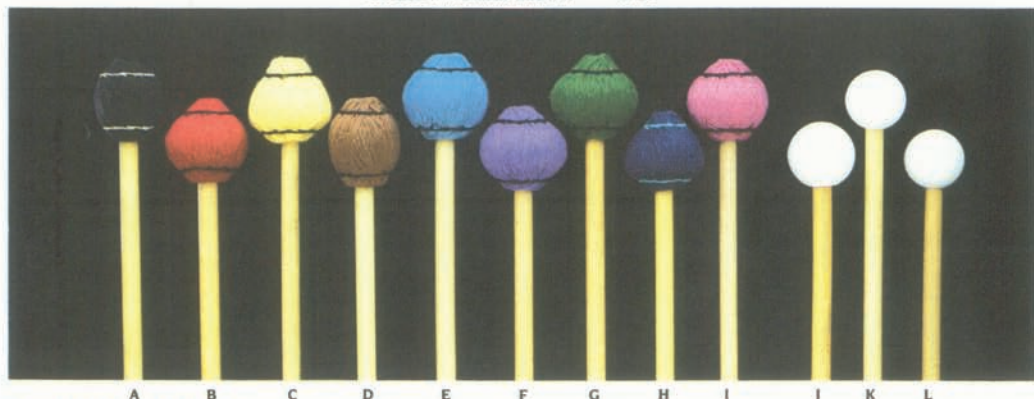
Your new instrument is guaranteed against any defects in workmanship and material through normal use. Please use good judgment in selecting your mallets. Use of brass or steel ball mallets will nullify the guarantee. Do not use Acrylic or Lexan mallets on wood keyboards.



Rattan Handle Mallets

These high quality mallets feature select rattan handles. Rubber heads are hardness-graduated for a wide selection of tonal responses. Finest grade cord or yarn is used on covered mallets. Each mallet is carefully matched and balanced for flex, weight, and size. Packed in clear-view vinyl cases. The professional Gary Burton Signature Mallets (M-220, M-221) are crafted to his personal specifications.

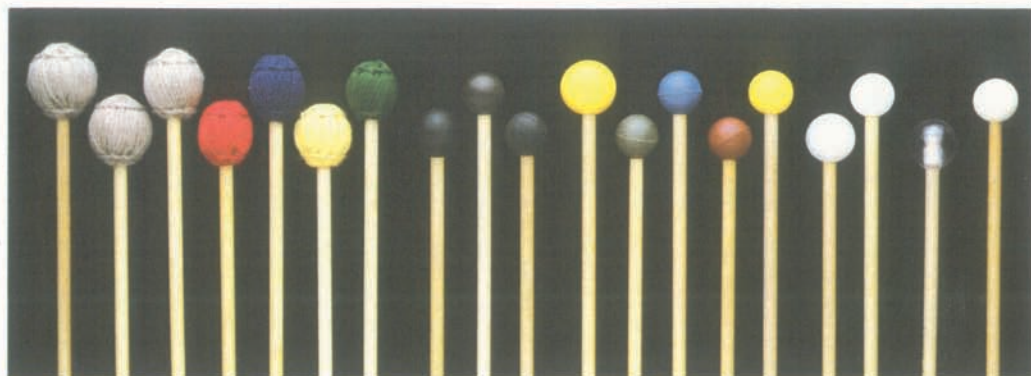
Description	Model No.	Description	Model No.
A. Yarn 1 1/8", Very Soft, Natural (M)	M-204	N. Cord 1", Soft, Yellow (V)	M-218
B. Yarn 1 1/8", Very Soft, Gray (M)	M-223	O. Phenolic 1", Hard, Brown (B, X)	M-215
C. Yarn 1 1/8", Soft, Gray (M)	M-210	P. Rubber 1 1/8", Medium Soft, Yellow (M)	M-205
D. Yarn 1 1/8", Medium Hard, Gold (M, V)	M-221	Q. Rubber 1", Hard, Gray (B, X)	M-214
E. Yarn 1 1/8", Soft, Gray (M)	M-209	R. Rubber 1", Medium Hard, Blue (M, B, X)	M-213
F. Yarn 1 1/8", Soft, Black (M, V)	M-220	S. Rubber 1", Medium, Red (M, X)	M-212
G. Yarn 1", Hard, Red (M)	M-206	T. Rubber 1", Medium Soft, Black (M)	M-224
H. Yarn 1", Medium, Blue (M, V)	M-207	U. Rubber 1", Soft, Yellow (M)	M-211
I. Yarn 1", Medium Soft, Yellow (M)	M-208	V. Lexan 1 1/8", Very Hard, Clear (B, X)	M-203
J. Yarn 1", Soft, Green (M)	M-222		
K. Yarn 1", Soft, Red (M)	M-219		
L. Cord 1", Hard, Red (V, X)	M-216		
M. Cord 1", Medium, Blue (V)	M-217		



Good Vibes Mallets

Good Vibes are recognized as the world's finest professional mallets. Handles are choice light rattan, carefully selected and matched for size, weight, and flex. Select premium yarn is wound around a solid, specially formulated and shaped rubber core, then carefully hand-stitched. Packed in clear-view vinyl cases.

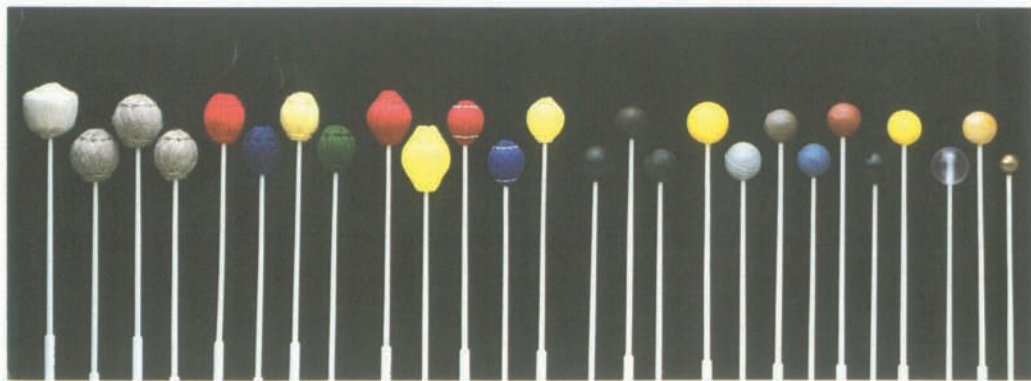
Description	Model No.	Description	Model No.
A. Yarn 1 1/8", Hard, Black (X)	M-232	G. Yarn 1 1/8", Medium Hard, Green (V)	M-239
B. Yarn 1 1/8", Hard, Red (V)	M-236	H. Yarn 1 1/8", Medium Soft, Navy Blue (M, V)	M-228
C. Yarn 1 1/8", Medium Hard, Yellow (M, V)	M-229	I. Yarn 1 1/8", Medium Soft, Pink (V)	M-233
D. Yarn 1 1/8", Medium Hard, Brown (X)	M-231	J. Poly 1 1/8", Medium Hard, White (B, X)	M-226
E. Yarn 1 1/8", Medium Hard, Royal Blue (V)	M-235	K. Poly 1", Medium Hard, White (B, X)	M-225
F. Yarn 1 1/8", Medium Hard, Violet (V)	M-237	L. Nylon 1", Hard, White (B, X)	M-227



Birch Handle Mallets

For the mallet player who wants a straight, but firmer, wood handle mallet. Precision matched for balance, these mallets come with rubber, plastic, or yarn heads. Packaged in clear vinyl cases.

Description	Model No.		
A. Yarn 1 1/8". Very Soft, Gray (M)	M-412	K. Rubber 1 1/2", Medium Soft, Yellow (M)	M-413
B. Yarn 1 1/2", Soft, Gray (M)	M-410	L. Rubber 1", Hard, Gray (B, X)	M-404
C. Yarn 1 1/8", Soft, Gray (M)	M-409	M. Rubber 1", Medium Hard, Blue (M, B, X)	M-403
D. Yarn 1", Hard, Red (M)	M-406	N. Rubber 1", Medium, Red (M, X)	M-402
E. Yarn 1", Medium, Blue (M, V)	M-407	O. Rubber 1", Soft, Yellow (M)	M-401
F. Yarn 1", Medium Soft, Yellow (M)	M-408	P. Poly 1 1/8", Medium Hard, White (B, X)	M-4226
G. Yarn 1", Soft, Green (M)	M-411	Q. Poly 1", Medium Hard, White (B, X)	M-4225
H. Phenolic 1 1/8", Hard, Black (B, X)	M-424	R. Lexan 1 1/8", Very Hard, Clear (B, X)	M-423
I. Phenolic 1", Hard, Brown (B, X)	M-405	S. Nylon 1", Hard, White (B, X)	M-4227
J. Phenolic 1", Hard, Black (B, X)	M-428		



Two-Step Handle Mallets

Musser's exclusive two-step fiber-glass handles are thick near the end for well-balanced handling and thin near the head for strong striking force. Excellent flexibility, yet highly warp resistant. All mallets precision matched for balance. Available in a wide variety of graduated rubber, plastic, metal, and wood balls as well as cord or yarn-covered balls. Packaged in clear vinyl cases.

Description	Model No.		
A. Yarn 1 3/8". Soft, Natural (M)	M-19	P. Phenolic 1", Hard, Black (B, X)	M-28
B. Yarn 1 3/8". Very Soft, Gray (M)	M-12	Q. Rubber 1 1/2", Medium Soft, Yellow (M)	M-13
C. Yarn 1 1/2", Soft, Gray (M)	M-10	R. Rubber 1 1/8", Hard, Gray (B, X)	M-22
D. Yarn 1 1/8", Soft, Gray (M)	M-9	S. Rubber 1", Hard, Gray (B, X)	M-4
E. Yarn 1", Hard, Red (M)	M-6	T. Rubber 1", Medium Hard, Blue (M, B, X)	M-3
F. Yarn 1", Medium, Blue (M, V)	M-7	U. Rubber 1", Medium, Red (M, X)	M-2
G. Yarn 1", Medium Soft, Yellow (M)	M-8	V. Rubber 1", Medium Soft, Black (M)	M-25
H. Yarn 1", Soft, Green (M)	M-11	W. Rubber 1", Soft, Yellow (M)	M-1
I. Cord 1 1/2", Medium Hard, Red (M, V)	M-27	X. Lexan 1 1/8", Very Hard, Clear (B, X)	M-23
J. Cord 1 1/2", Medium, Yellow (M, V)	M-29	Y. Wood 1", Hard, Maple ()	M-15
K. Cord 1", Hard, Red (V, X)	M-16	Z. Brass 3/8", Very Hard, Gold (Steel Bells)	M-14
L. Cord 1", Medium, Blue (V)	M-17		
M. Cord 1", Soft, Yellow (V)	M-18		
N. Phenolic 1 1/8", Hard, Black (B, X)	M-24		
O. Phenolic 1", Hard, Brown (B, X)	M-5		

USAGE CODE: V = Vibraphone, M = Marimba, X = Xylophone, B = Bells

HOW TO OBTAIN MALLETS, REPLACEMENT PARTS, OR SERVICE

CONTACT YOUR LOCAL LUDWIG/MUSSER AUTHORIZED DEALER. THE DEALER WILL CONTACT OUR DEALER SERVICE DEPARTMENT TO ASSIST YOU.

IF YOU CANNOT LOCATE AN AUTHORIZED DEALER, PLEASE CALL 574-522-1675 AND ASK FOR DEALER SERVICE.

**VISIT OUR LUDWIG/MUSSER
WEB SITE ON THE INTERNET
<http://www.ludwig-drums.com>**

Products

- Drum Outfits
- Snare Drums
- Marching Percussion
- Concert Percussion
- Educational Percussion
- Hardware

Promotional Items

- Catalogs/Brochures
- Posters
- Wearable Items

What's New

- New Product Press Releases
- Percussion Events

Artists/Clinicians

- Drum Outfits
- Marching
- Mallet Instrument
- Total Percussion

Dealers

- USA by State
- Canada by Province
- International Distributors