

MUSSEER

A DIVISION OF THE SELMER COMPANY, INC.

M48 PRO TRAVELER VIBE



MUSSER

A DIVISION OF THE CONN-SELMER, INC.

Dear Customer,

We at Musser want to thank you for selecting one of our percussion instruments. Generations of **American Craftsmanship**, Knowledge and Pride go into each and every **Musser** product.

In striving to offer the highest quality instruments and service in meeting your musical needs, we ask that you please complete both the registration Form and our Customer Satisfaction Survey.

If you are pleased, **tell everyone**; if you are not, **please let us know. WE WANT TO KNOW!**

Specifications are subject to change without notice as we at Musser continue to improve our products. The information in this manual is intended to be of a general nature only.

Thank you,

All Employees
Musser Division
Conn-Selmer Inc.

ASSEMBLY INSTRUCTIONS - M48

PARTS LIST

- | | |
|--|--|
| 1 set of Bars (not applicable if frame only) | 1 3-piece Crossbar |
| 1 Wide End Leg | 1 Narrow End Leg |
| 1 2-piece Sharp Scale Resonator | 1 2-piece Natural Scale Resonator |
| 1 Upper Pull Rod | 1 Pedal assembly |
| 1 Wide End Assembly (Wood) | 1 set of 4 Wood Rails |
| 1 Damper Bar and Bracket | 1 Narrow End Assembly (Wood) |
| 9 Black Tightening Knobs | 8 Locking Tri-Cornered Knobs for Resonators. |

Pro Traveler Vibe

A cooperative effort between Musser and Gary Burton, the Pro Traveler is a remarkable combination of superb musicality and easy portability. In tone and dynamic response, its only equals are the Musser Century and Pro Vibes. Yet, it can be carted in a small car and set up by one person. Crossbar and damper mechanisms separate into two pieces. Metal legs detach quickly. Frame rails fold in half. A unique collar locking mechanism connects the two-piece pulsator shaft. And from the strong Total-Lock casters to the baked-on frame finish, all Pro Traveler components are designed to take the rigors of the road. Supplied with mallets and shallow drop cover.

No. M-48



The Pro Traveler is easily set up by one person.

Available custom cases are back-seat size.

Read all instructions thoroughly before assembling the instrument. Handle all parts carefully.

TO INSTALL CASTERS

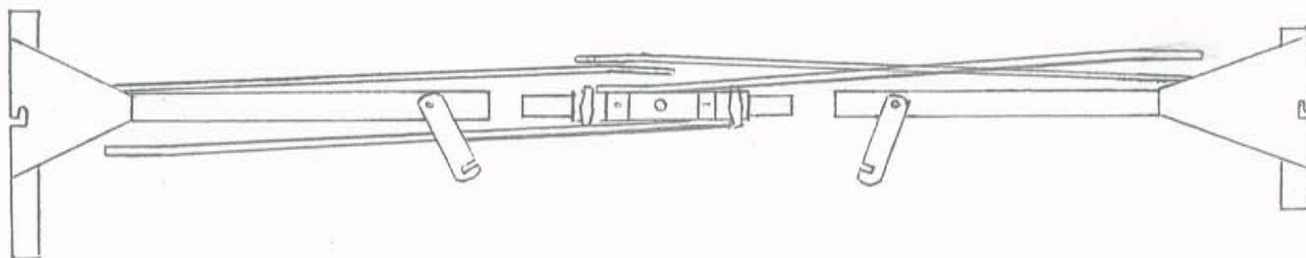
- A. Lock Brake
- B. Insert Caster Stem into Leg
- C. Turn Caster clockwise until it is firmly secured in Leg.
- D. Release Brakes

TO REMOVE CASTERS

- A. Lock Brake
- B. Turn Caster counter-clockwise

NOTE: Do not attempt to move the instrument, or place the Resonators into Frame, until all four Wood Rails have been properly installed.

Step 1. Assembly the three piece Crossbar and secure with Lock Plates and Knobs as shown in Figure I.



THREE PIECE CROSSBAR
(BOTTOM VIEW)

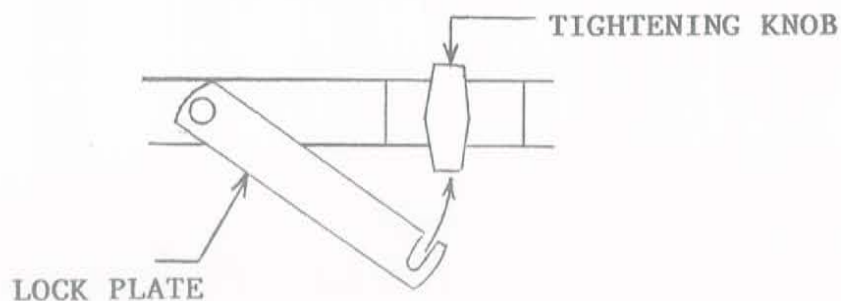


FIGURE I

Step 2. Attach the slot on the Wide End of the Crossbar to the Screw on the bottom of the Wide Leg and fasten with Black Knob.

Note: "This end in" Label on Legs must face toward center of instrument. Do the same with the Narrow End of the Crossbar and Leg. See Figure II

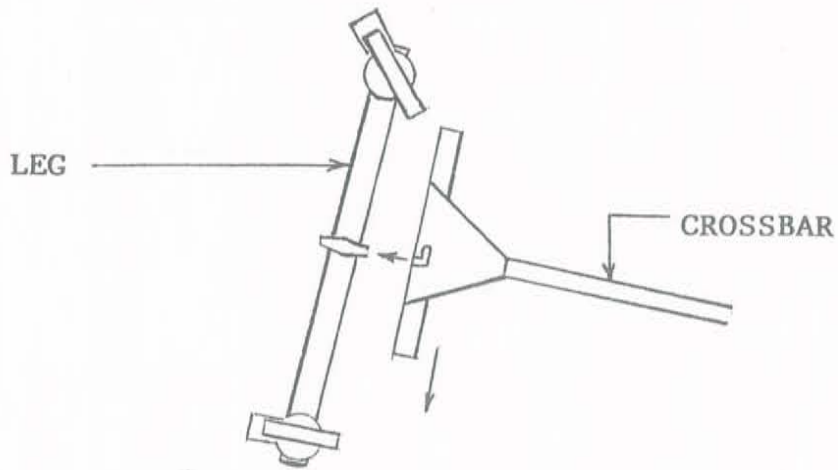


FIGURE II

Step 3. Refer to Figure III to assemble End Pieces to the Legs. Guide the Threaded Studs on the Wide and Narrow Wood End Pieces through the holes in the Plate on each Leg. Secure each End Piece with two Black Tightening Knobs as shown.

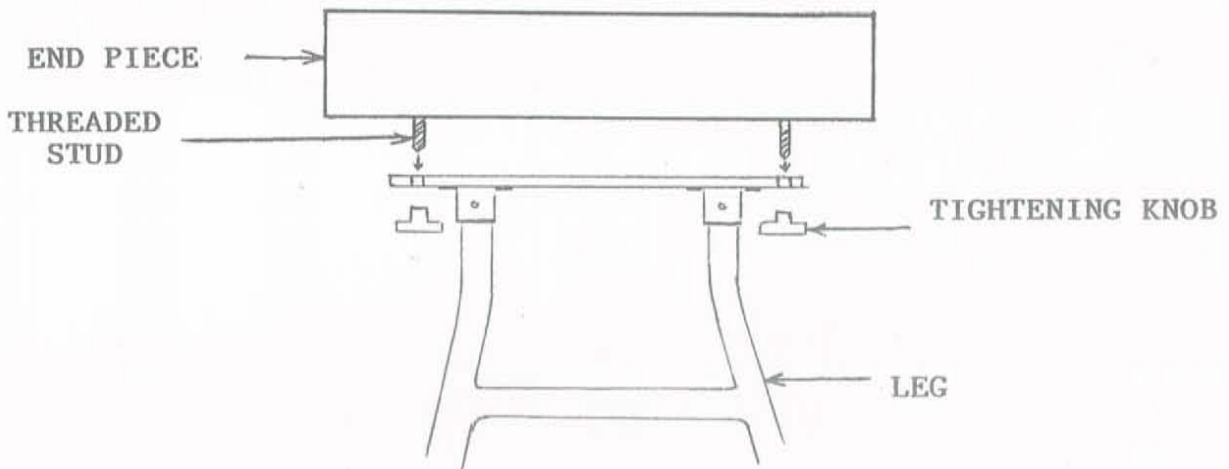


FIGURE III

Step 4. Place the #2 and #3 Wood Rails on the Pin Brackets at the Wide End and on the Wood Motor Mounting Block at the Narrow End of the Frame and push down completely.

Note: The Rail Number is always stamped on the end of the Rail that attaches to the Wide End Piece.

Connect the Small Nodal Wire on the #2 Rail to the Block on the #3 Rail. See Figure IV.

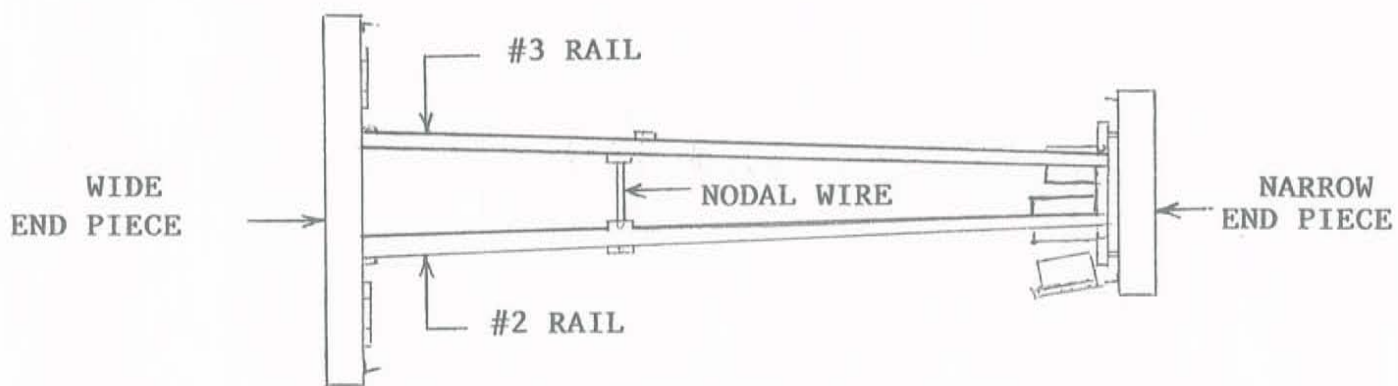


FIGURE IV

Step 5. Attach the Diagonal Braces to the Threaded Studs on the #2 Rail and secure with the Wing Nuts as shown in Figure V.

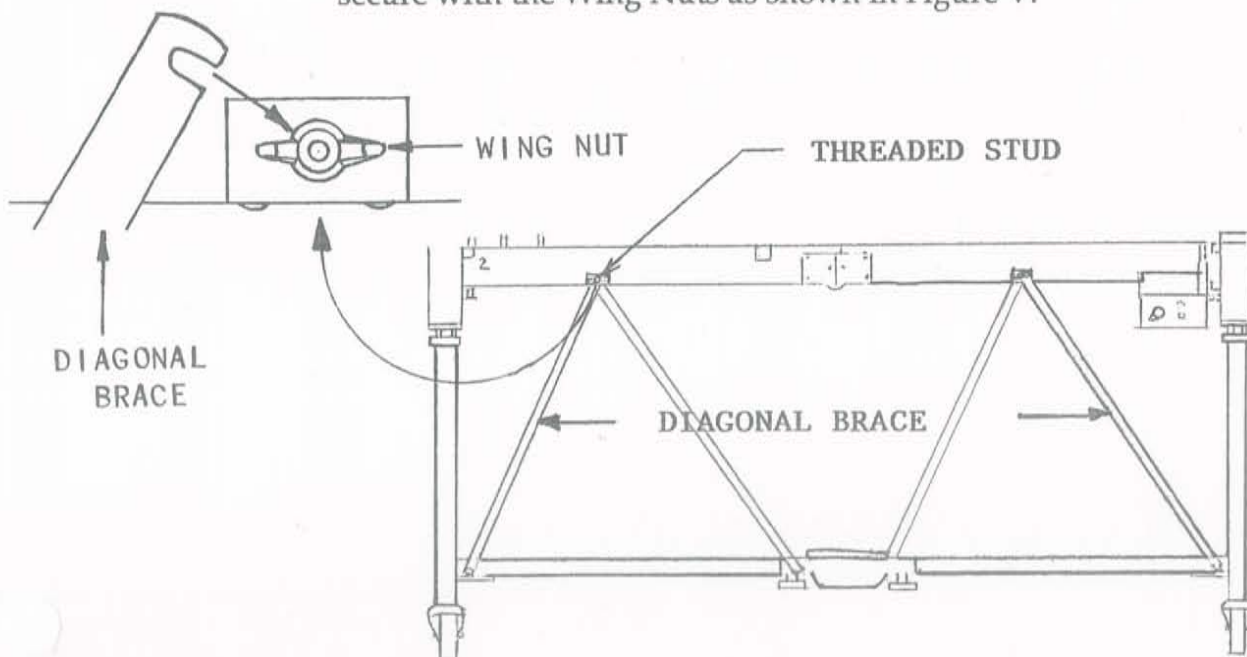


FIGURE V

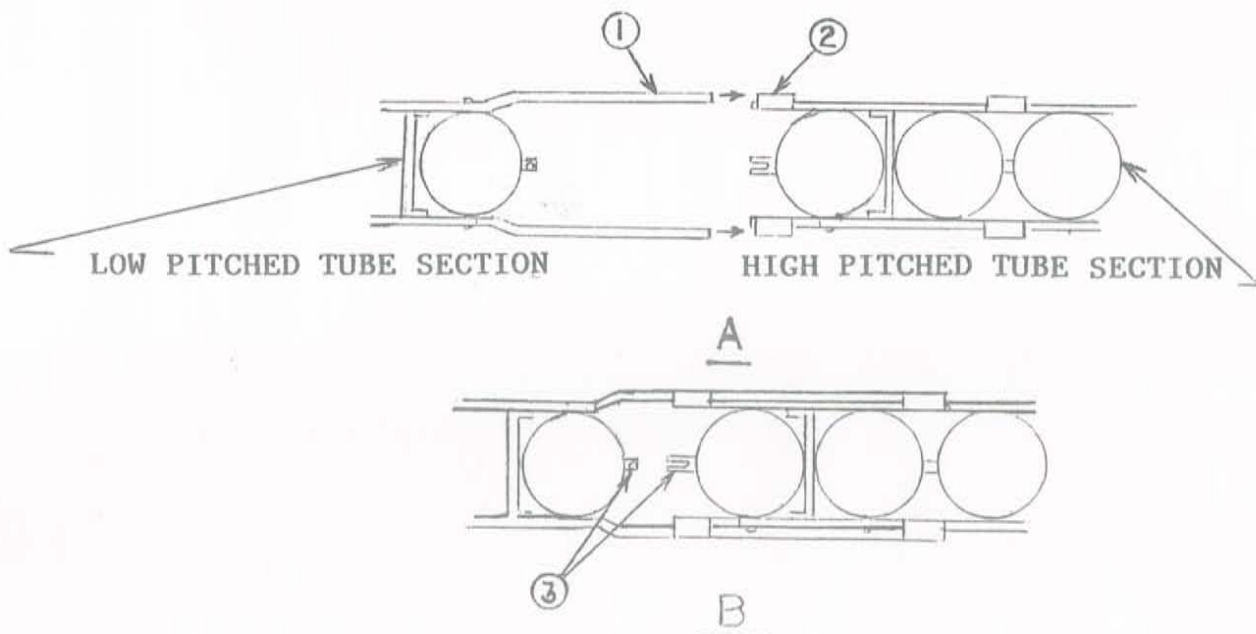
Step 6. Place the #1 and #4 Wood Rails on the Pin Brackets at the Wide and Narrow End of the instrument and push down completely. Do not attach the Nodal Wires between the Rails at this time.

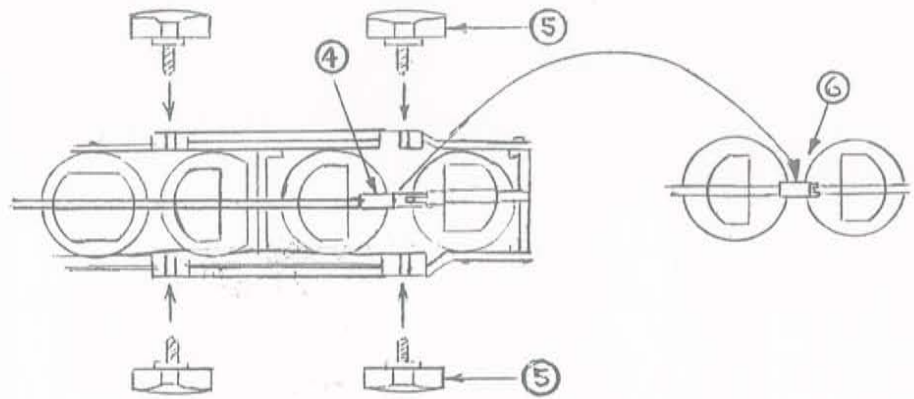
Note: *All four Rails must be attached to the Frame before the Resonators are installed.*

Step 7. To assemble Resonators, refer to Figure VI. Lay the Natural Scale Resonator Tubes down on a flat surface. (The end with the Discs in the Tubes will be toward the ground) as in "A". (This view is from the top looking down.) Slide the Strips of the Low Pitched Resonator Section (1) into the Clips of the High Pitched Tube Section (2). Make certain your fingers are not between the two Resonator Sections. Push the two sections together until they are positioned as in "B". Lay the Resonator on its side and line up the Pin and Slot on the Shaft at (3). Carefully slide the Resonator Sections together until the Pin is completely into the Slot as shown in "C".

Note: The Rubber Pulsator Shaft Insulator on the Sleeve Portion of the Shaft at (4), should be pushed away from the Junction Point of the two Shafts, to allow for a clear view when aligning the Shafts. This view is from the top of the Tubes (with Discs).

Secure the Resonator together using the Tightening Knobs shown in "C". Install the Knobs at (5) first. Do not fully tighten until all Knobs are in place. Using your fingers, slide the Rubber Insulator over the junction point of the two Shafts as shown in (6). Follow the same procedure to assemble the Sharp Scale Resonator.





C

FIGURE VI

Step 8.

Refer to Figure VII to install the Resonators. The Cover Plate on the Narrow End Piece must be be in the up position. The Resonators must be installed from the Top of the Frame. Guide the Natural Scale Resonator between the Rails and insert the Wide End side into the Slots of the Rubber Mounting Bracket. Rest the Narrow End side on the Wood Block on which the Motor is mounted.

Be certain the Resonator is pulled toward the Wide End as far as the Rubber Mounting will allow it to go. Install the Sharp Scale Resonator in a similar manner.

RESONATOR MUST BE POSITIONED IN THE RUBBER SLOTS AS FAR AS IT WILL GO TOWARD THE WIDE END.
 THIS END FITS INTO SLOTS OF RUBBER. ←

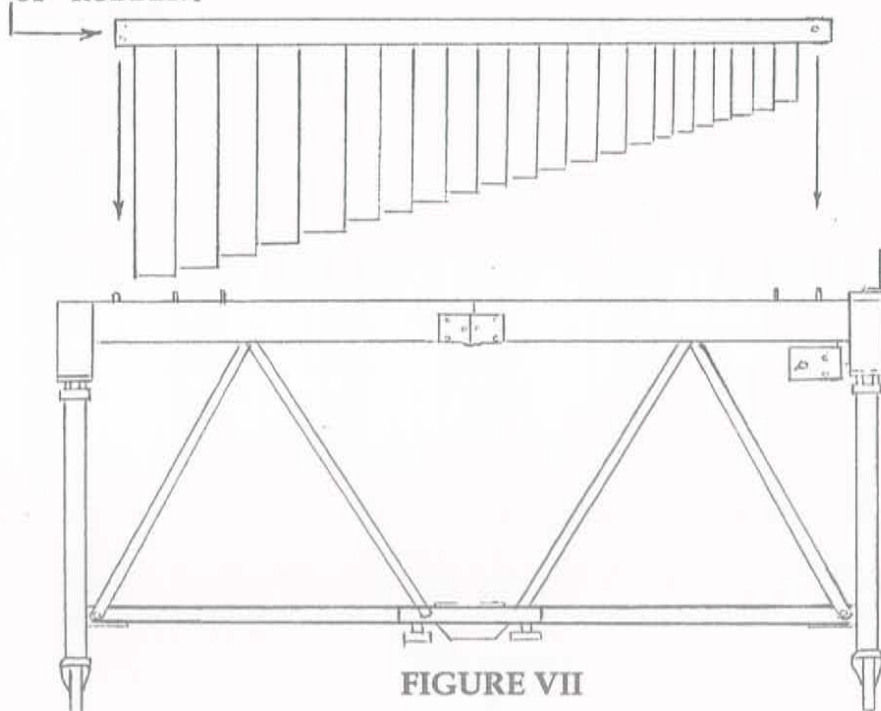


FIGURE VII

Step 9

Refer to Figure VIII. Place the two pieces of the Damper Bar Felt side down on a Flat Surface and slide the two-piece Damper Bar together. Lock the Bar in place by swinging the Lock Plate over the Tapped Hole and secure the two halves together with the Black "T" Handle Wing Screw. Make sure the screw is tightened down completely.

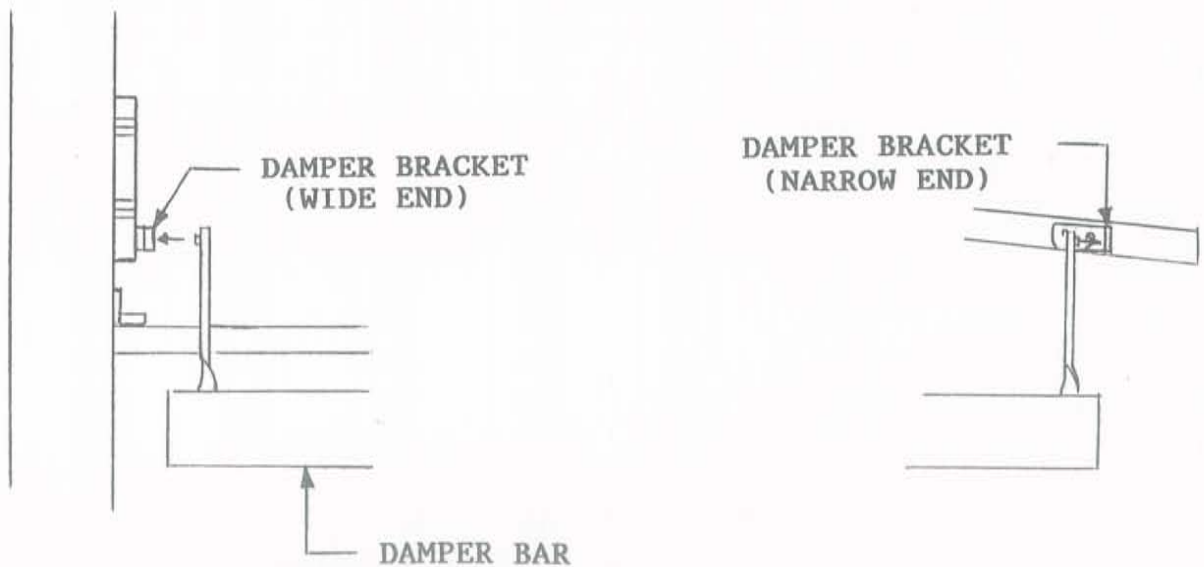
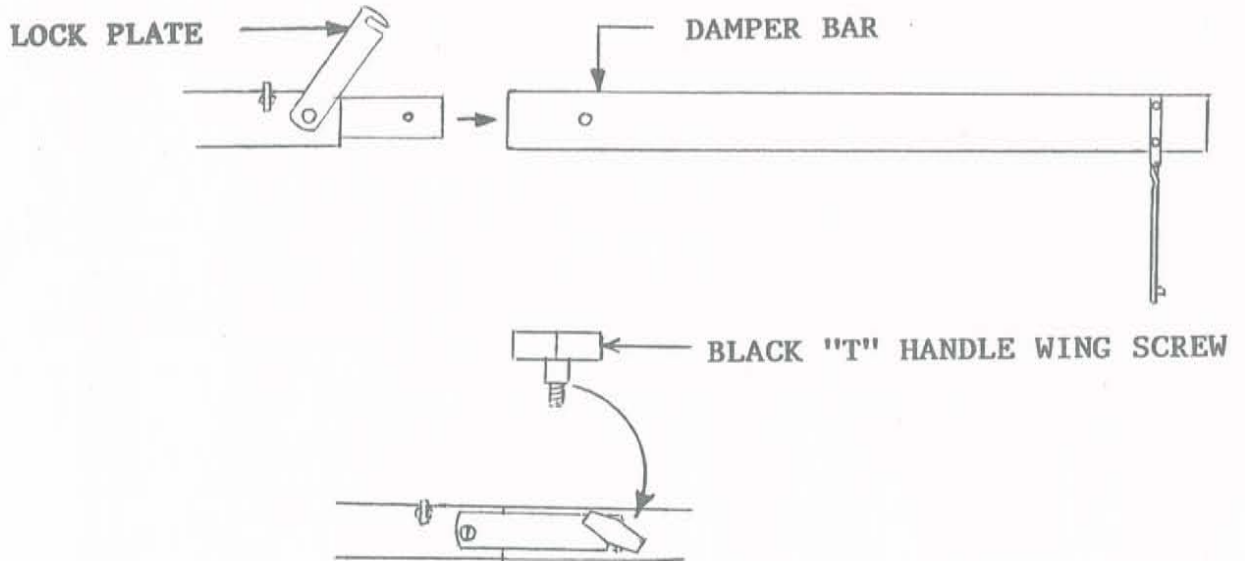


FIGURE VIII

Step 10. Attach the Damper Bar to the Frame. Note where the "V" shaped Damper Bracket is located. See Figure IX

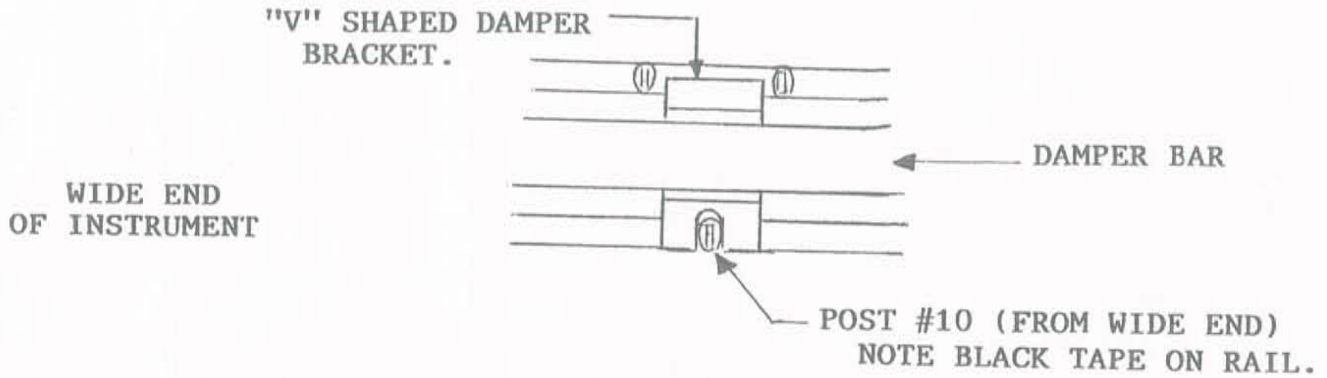


FIGURE IX

Step 11. Attach the Pedal Assembly to the Crossbar using the Black Tightening Knob as shown in Figure X. Attach the Upper Pull Rod to the Eye Bolt on the bottom of the Damper Bar.

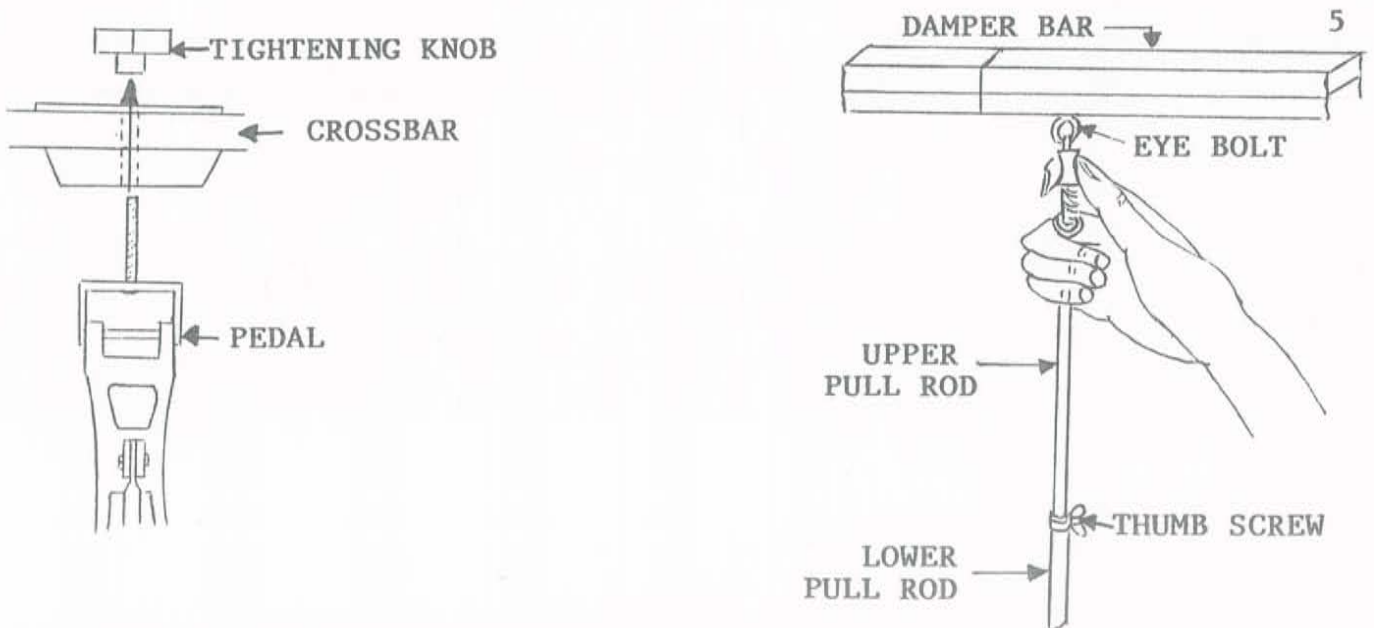


FIGURE X

Step 12. Refer to Figure XI and attach the Nodal Wire between the #1 and #2 Rails. Connect the Nodal Wire between the #3 and #4 Rails.

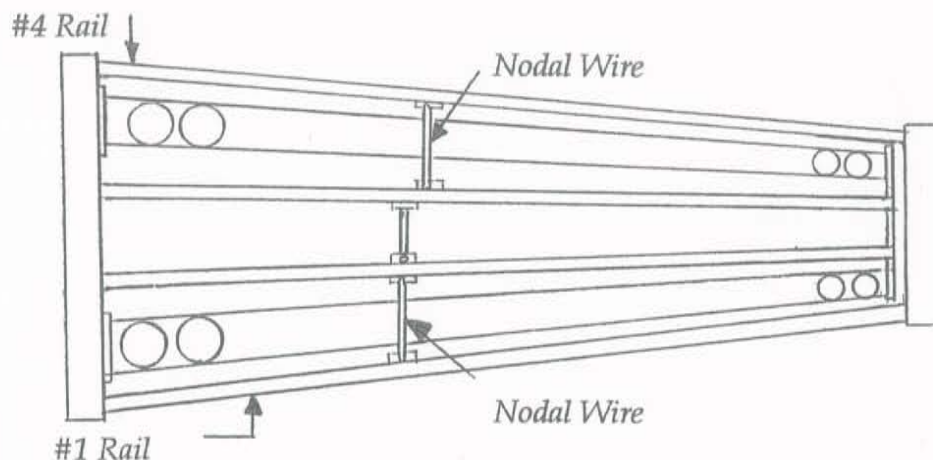


FIGURE XI

Step 13. Place Bars on the Frame and adjust the Damper Pedal to desired Playing Height. Tighten the Thumb Screw on the Lower Pull Rod securely to prevent the Upper Pull Rod from slipping. See Figure X. Place the Rubber Pulley Belt around the Pulleys at the end of the Resonators. Be sure the Belt is also around the Pulley on the Motor.

Note: When the Motor is not being used, the Pulsator Discs in the Tubes should be set at a 45 degree angle to achieve the most balanced Resonance across the entire Keyboard. See Figure XII.

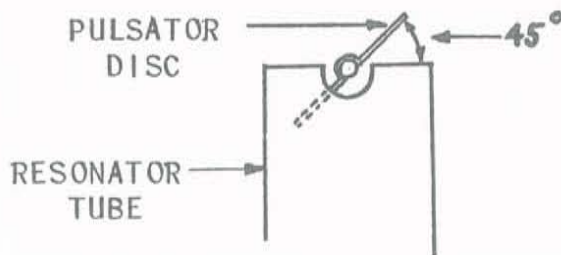
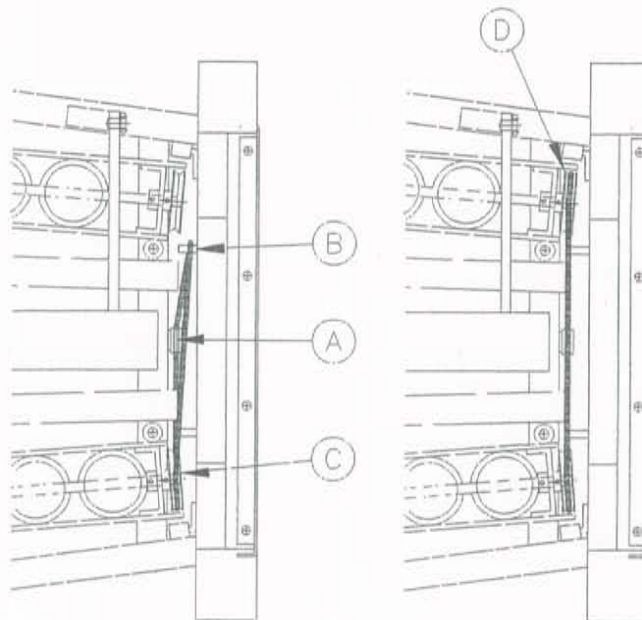


FIGURE XII

The Junction Point of the Shaft in the Resonators (see Figure VI, Number 3), should be Lubricated with a Light Motor Oil occasionally to insure proper performance.

How to install the "O" Ring Drive Belt on to your instrument.

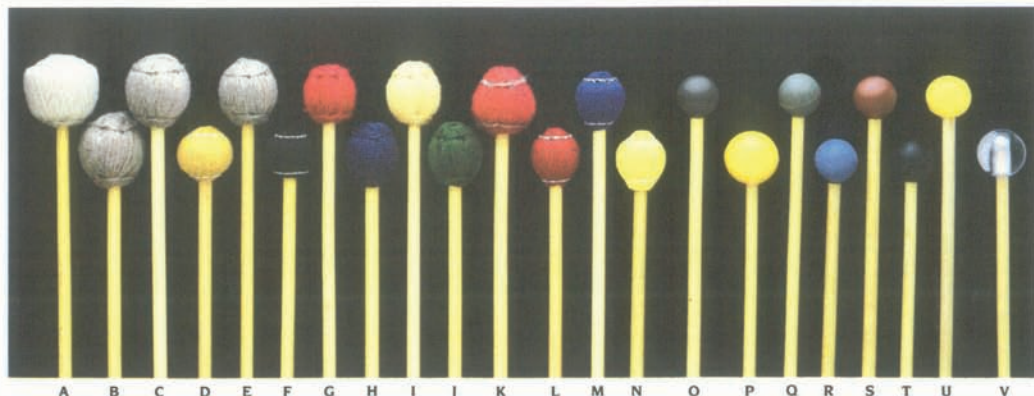
- A. Slip the Belt around the Pulley on the motor.
- B. Slip Belt around the outside of the pin at "B".
- C. Attach the Belt around the pulley on the PLAIN Scale Resonator.
- D. Stretch the Belt toward, then around the SHARP Scale Resonator Pulley.



IMPORTANT

When the Vibe Motor is not being used, Pulsator Discs in Resonators should be set at a 45-degree angle for maximum resonance.

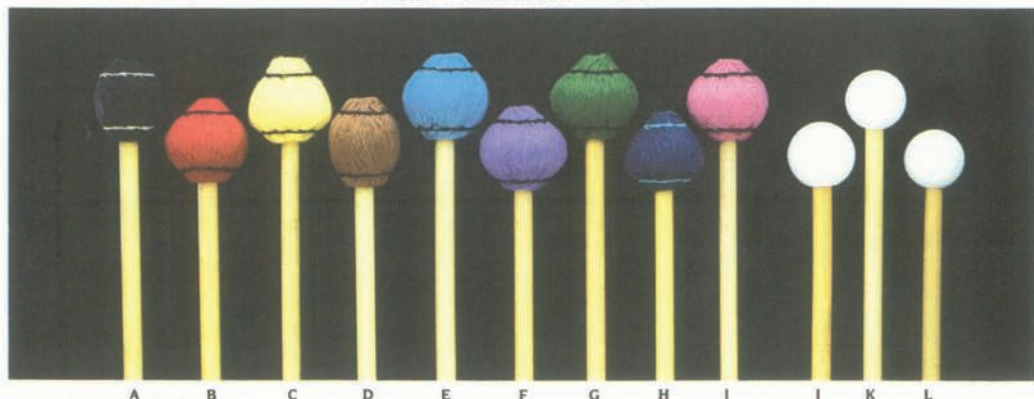
Your new instrument is guaranteed against defects in workmanship and material through normal use. Please use good judgement in selecting your mallets. Use of brass or steel ball mallets will nullify the guarantee. Do not use acrylic or lexan mallets on wood keyboards.



Rattan Handle Mallets

These high quality mallets feature select rattan handles. Rubber heads are hardness-graduated for a wide selection of tonal responses. Finest grade cord or yarn is used on covered mallets. Each mallet is carefully matched and balanced for flex, weight, and size. Packed in clear-view vinyl cases. The professional Gary Burton Signature Mallets (M-220, M-221) are crafted to his personal specifications.

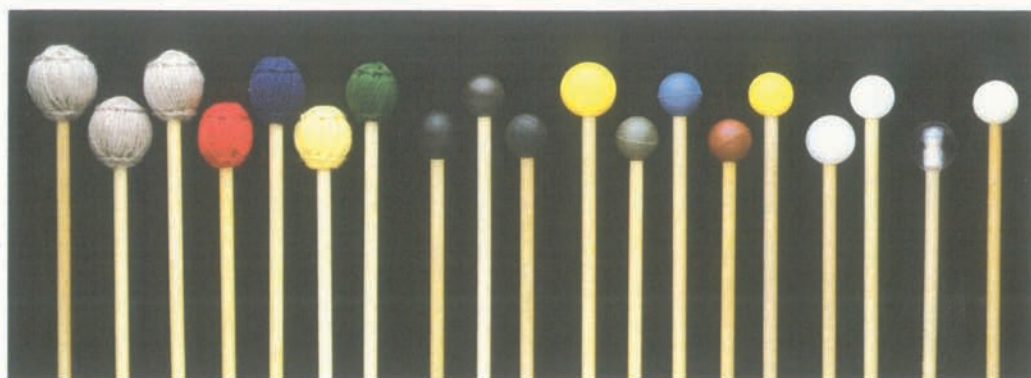
Description	Model No.	Description	Model No.
A. Yarn 1 1/8", Very Soft, Natural (M)	M-204	N. Cord 1", Soft, Yellow (V)	M-218
B. Yarn 1 1/8", Very Soft, Gray (M)	M-223	O. Phenolic 1", Hard, Brown (B, X)	M-215
C. Yarn 1 1/8", Soft, Gray (M)	M-210	P. Rubber 1 1/8", Medium Soft, Yellow (M)	M-205
D. Yarn 1 1/8", Medium Hard, Gold (M, V)	M-221	Q. Rubber 1", Hard, Gray (B, X)	M-214
E. Yarn 1 1/8", Soft, Gray (M)	M-209	R. Rubber 1", Medium Hard, Blue (M, B, X)	M-213
F. Yarn 1 1/8", Soft, Black (M, V)	M-220	S. Rubber 1", Medium, Red (M, X)	M-212
G. Yarn 1", Hard, Red (M)	M-206	T. Rubber 1", Medium Soft, Black (M)	M-224
H. Yarn 1", Medium, Blue (M, V)	M-207	U. Rubber 1", Soft, Yellow (M)	M-211
I. Yarn 1", Medium Soft, Yellow (M)	M-208	V. Lexan 1 1/8", Very Hard, Clear (B, X)	M-203
J. Yarn 1", Soft, Green (M)	M-222		
K. Yarn 1", Soft, Red (M)	M-219		
L. Cord 1", Hard, Red (V, X)	M-216		
M. Cord 1", Medium, Blue (V)	M-217		



Good Vibes Mallets

Good Vibes are recognized as the world's finest professional mallets. Handles are choice light rattan, carefully selected and matched for size, weight, and flex. Select premium yarn is wound around a solid, specially formulated and shaped rubber core, then carefully hand-stitched. Packed in clear-view vinyl cases.

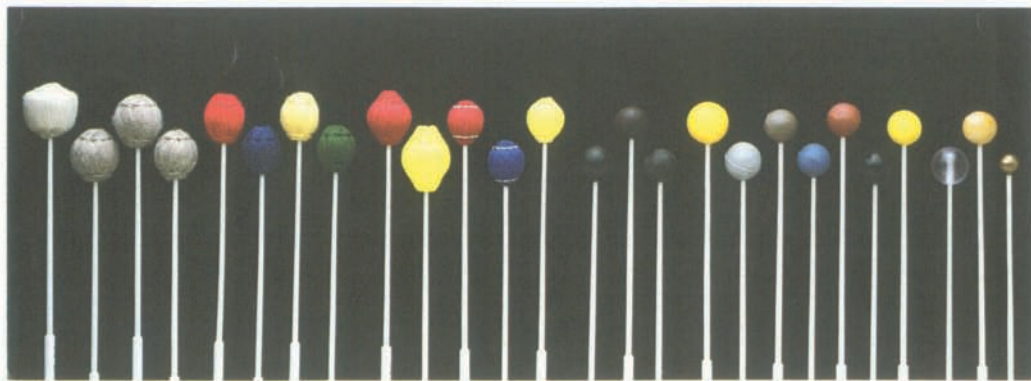
Description	Model No.	Description	Model No.
A. Yarn 1 1/8", Hard, Black (X)	M-232	G. Yarn 1 1/8", Medium Hard, Green (V)	M-239
B. Yarn 1 1/8", Hard, Red (V)	M-236	H. Yarn 1 1/8", Medium Soft, Navy Blue (M, V)	M-228
C. Yarn 1 1/8", Medium Hard, Yellow (M, V)	M-229	I. Yarn 1 1/8", Medium Soft, Pink (V)	M-233
D. Yarn 1 1/8", Medium Hard, Brown (X)	M-231	J. Poly 1 1/8", Medium Hard, White (B, X)	M-226
E. Yarn 1 1/8", Medium Hard, Royal Blue (V)	M-235	K. Poly 1", Medium Hard, White (B, X)	M-225
F. Yarn 1 1/8", Medium Hard, Violet (V)	M-237	L. Nylon 1", Hard, White (B, X)	M-227



Birch Handle Mallets

For the mallet player who wants a straight, but firmer, wood handle mallet. Precision matched for balance, these mallets come with rubber, plastic, or yarn heads. Packaged in clear vinyl cases.

Description	Model No.	
A. Yarn 1 1/8". Very Soft, Gray (M)	M-412	K. Rubber 1 1/2", Medium Soft, Yellow (M)
B. Yarn 1 1/2", Soft, Gray (M)	M-410	L. Rubber 1", Hard, Gray (B, X)
C. Yarn 1 1/8", Soft, Gray (M)	M-409	M. Rubber 1", Medium Hard, Blue (M, B, X)
D. Yarn 1", Hard, Red (M)	M-406	N. Rubber 1", Medium, Red (M, X)
E. Yarn 1", Medium, Blue (M, V)	M-407	O. Rubber 1", Soft, Yellow (M)
F. Yarn 1", Medium Soft, Yellow (M)	M-408	P. Poly 1 1/8", Medium Hard, White (B, X)
G. Yarn 1", Soft, Green (M)	M-411	Q. Poly 1", Medium Hard, White (B, X)
H. Phenolic 1 1/8", Hard, Black (B, X)	M-424	R. Lexan 1 1/8", Very Hard, Clear (B, X)
I. Phenolic 1", Hard, Brown (B, X)	M-405	S. Nylon 1", Hard, White (B, X)
J. Phenolic 1", Hard, Black (B, X)	M-428	



Two-Step Handle Mallets

Musser's exclusive two-step fiber-glass handles are thick near the end for well-balanced handling and thin near the head for strong striking force. Excellent flexibility, yet highly warp resistant. All mallets precision matched for balance. Available in a wide variety of graduated rubber, plastic, metal, and wood balls as well as cord or yarn-covered balls. Packaged in clear vinyl cases.

Description	Model No.	
A. Yarn 1 3/8". Soft, Natural (M)	M-19	P. Phenolic 1", Hard, Black (B, X)
B. Yarn 1 3/8". Very Soft, Gray (M)	M-12	Q. Rubber 1 1/2", Medium Soft, Yellow (M)
C. Yarn 1 1/2", Soft, Gray (M)	M-10	R. Rubber 1 1/8", Hard, Gray (B, X)
D. Yarn 1 1/8", Soft, Gray (M)	M-9	S. Rubber 1", Hard, Gray (B, X)
E. Yarn 1", Hard, Red (M)	M-6	T. Rubber 1", Medium Hard, Blue (M, B, X)
F. Yarn 1", Medium, Blue (M, V)	M-7	U. Rubber 1", Medium, Red (M, X)
G. Yarn 1", Medium Soft, Yellow (M)	M-8	V. Rubber 1", Medium Soft, Black (M)
H. Yarn 1", Soft, Green (M)	M-11	W. Rubber 1", Soft, Yellow (M)
I. Cord 1 1/2", Medium Hard, Red (M, V)	M-27	X. Lexan 1 1/8", Very Hard, Clear (B, X)
J. Cord 1 1/2", Medium, Yellow (M, V)	M-29	Y. Wood 1", Hard, Maple ()
K. Cord 1", Hard, Red (V, X)	M-16	Z. Brass 3/8", Very Hard, Gold (Steel Bells)
L. Cord 1", Medium, Blue (V)	M-17	
M. Cord 1", Soft, Yellow (V)	M-18	
N. Phenolic 1 1/8", Hard, Black (B, X)	M-24	
O. Phenolic 1", Hard, Brown (B, X)	M-5	

USAGE CODE: V = Vibraphone, M = Marimba.
X = Xylophone, B = Bells

HOW TO OBTAIN MALLETS, REPLACEMENT PARTS, OR SERVICE

CONTACT YOUR LOCAL LUDWIG/MUSSER AUTHORIZED DEALER. THE DEALER WILL CONTACT OUR DEALER SERVICE DEPARTMENT TO ASSIST YOU.

IF YOU CANNOT LOCATE AN AUTHORIZED DEALER, PLEASE CALL 574-522-1675 AND ASK FOR DEALER SERVICE.

**VISIT OUR LUDWIG/MUSSER
WEB SITE ON THE INTERNET
<http://www.ludwig-drums.com>**

Products

- Drum Outfits
- Snare Drums
- Marching Percussion
- Concert Percussion
- Educational Percussion
- Hardware

Promotional Items

- Catalogs/Brochures
- Posters
- Wearable Items

What's New

- New Product Press Releases
- Percussion Events

Artists/Clinicians

- Drum Outfits
- Marching
- Mallet Instrument
- Total Percussion

Dealers

- USA by State
- Canada by Province
- International Distributors